

 **KZ-ASF**

## 10-unit balanced armature earphone

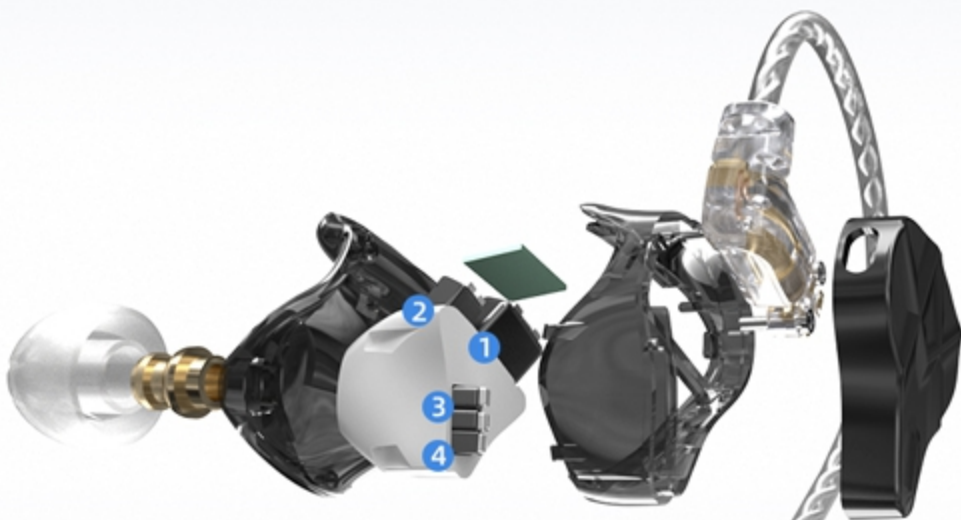
Following the flagship professional style, equipped with a new generation of efficient balanced armature



Marketing, just the icing on the cake

## **R&D is the focus of the product** **Really professional 5 balanced** **armature acoustic structure**

The hifi configuration of single side 5 unit balanced armature is clearly displayed, fearless for comparison.



**1** 22955s  
Low frequency BA

**2** 29689s  
Mid frequency BA

**3** 31736s  
Mid & high frequency BA

**4** 30095s  
High frequency BA

Let the music details return to purity

**condensing 10 years of acoustic  
experience, specializing in the  
development of a new generation  
of moving iron units**

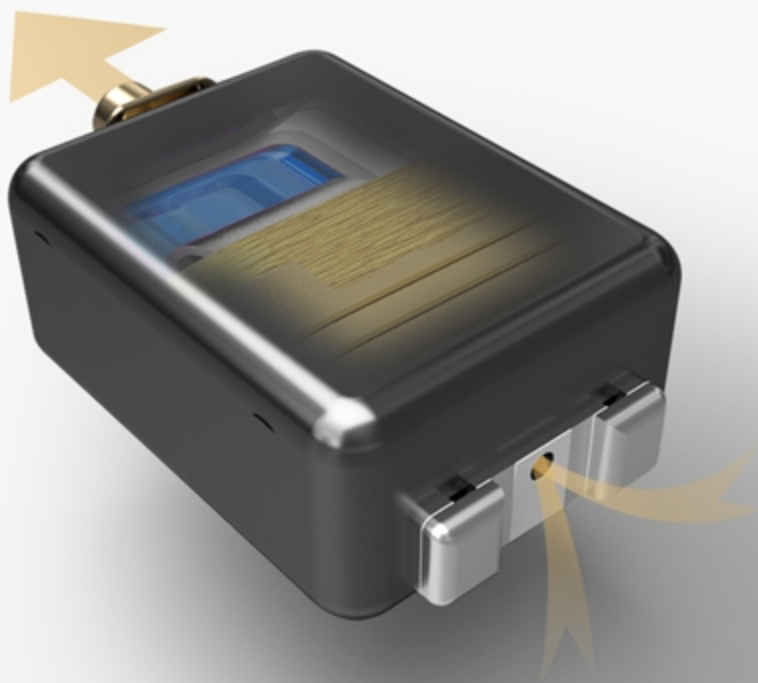
Different from the balanced armature in the market, it has brand-new acoustic technology from the inside to the outside, with a wider diaphragm and more powerful vibration, ensuring the rich details and full dynamics of the sound quality. Every small detail change is responsible for quality.



Excellent low-frequency texture  
and stronger response of dynamic

**Based on the stability of the moving  
iron structure, the back hole design  
enhances the low frequency capability**

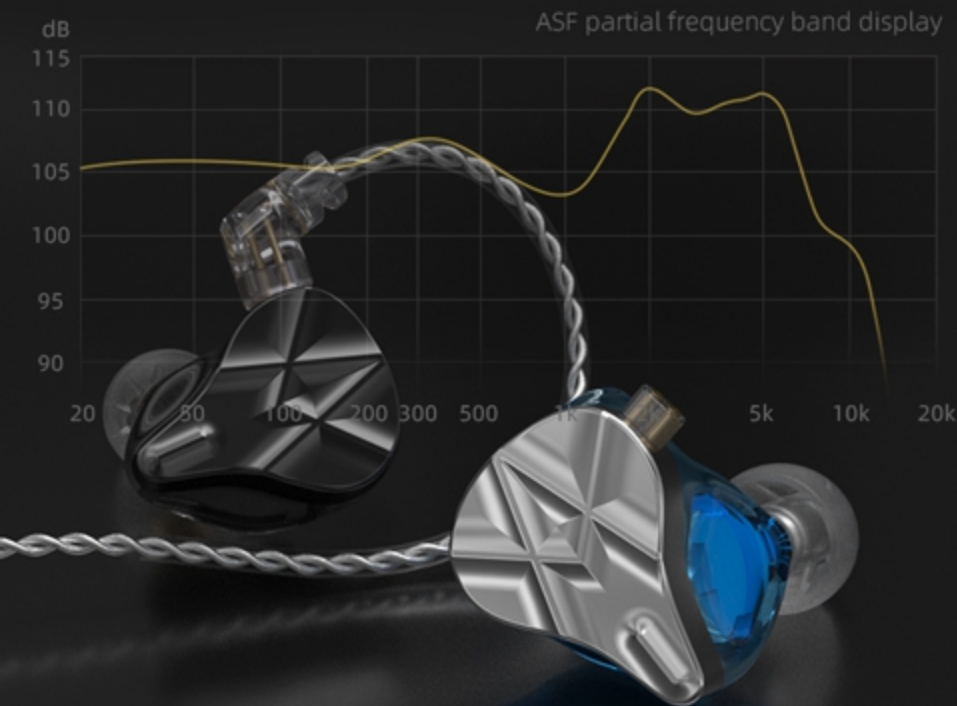
It allows the diaphragm to vibrate more freely  
than a conventional closed balanced armature unit,  
and at the same time, it can better control distortion  
than an open low frequency unit.



The medium frequency, which has not been taken seriously for a long time, is actually the basis of sound

## PCB integrated tuning circuit is balanced and truly presents a new style

From the perspective of the user's sense of hearing, professional-grade sound quality adjustments are carried out, and the mid-frequency performance is strengthened. The frequency response range of 10Hz-40000Hz can listen to the loud sound field, clear human voice, pure music...



\*Due to factors such as measurement environment and temperature, it is normal if there are slight tolerances on product parameters.



## Durable metal Aesthetics With colorful resin cavity

The strong zinc metal shell and imported resin cavity can restrain unnecessary vibration. Light and shadow flow to meet the needs of wearing comfort and visual enjoyment.



## **Standard 100-core transparent silver-plated wire blessing mid and high frequency texture performance**

Professional headphones should be equipped with Hifi cables to improve sound transparency, separation, sound field, etc., and reduce loss and distortion in signal transmission.



## **Highlight a comfortable noise isolation experience Design from the perspective of ergonomics**

Even in a very noisy environment, the faint sound details can be heard clearly, The in-ear special-shaped structure meets daily noise isolation needs and enhances wearing comfort.





## 0.75mm gold-plated connector

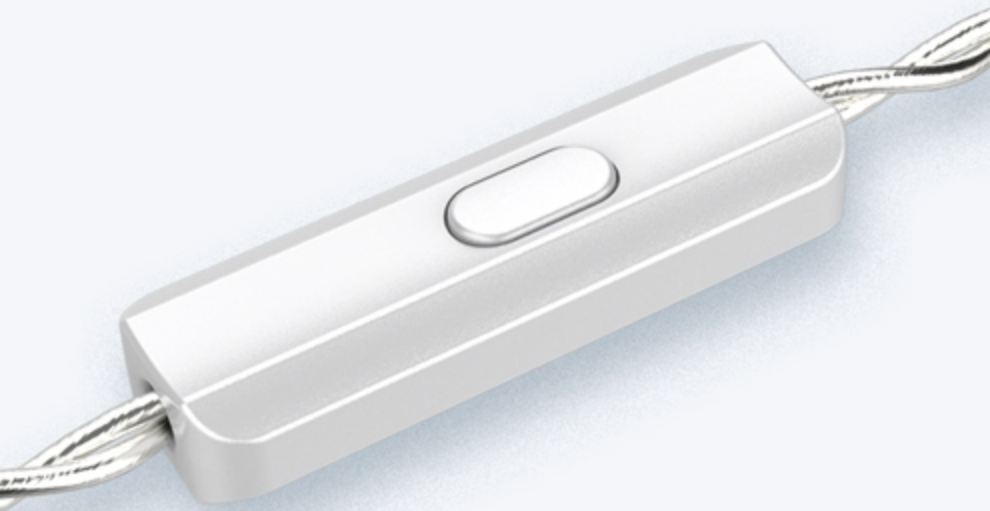
### Add more extended functions to the earphone

Support to replace the wire with the Bluetooth module and turn it into a Bluetooth headset. The Bluetooth module and upgrade cable need to be purchased separately.



## Customized dual capacitor MIC Support music/call function

Widely compatible with most brands of mobile phones,  
one-key control of multiple functions.



Play / Pause

Press Once

Previous Song

Even Press Three Times

Next Song

Press Two Times

Press Again

Hang Up

Keep Press

Reject

# Specifications

## Product Type

KZ-ASF

## Weight

32±3g

## Wear

In ear

## Sensitivity

105dB

## Impedance

18Ω

## Frequency

10-40000Hz

## Plug Type

3.5mm

## Pin Type

0.75mm

## Line Length

125±5cm

## Wire control

No Mic/With Mic

## Unit type

22955s BA\*1 29689s BA\*1  
31736s BA\*2 30095BA\*1

\*Due to factors such as measurement environment and temperature, it is normal if there are slight tolerances on product parameters.



## Silver & Blue

No Mic



## Black

No Mic



## Silver & Blue

With Mic



## Black

With Mic

